

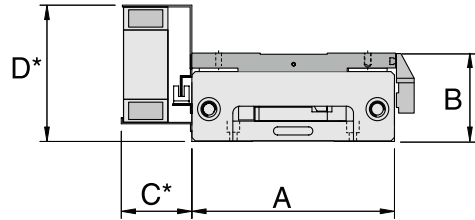
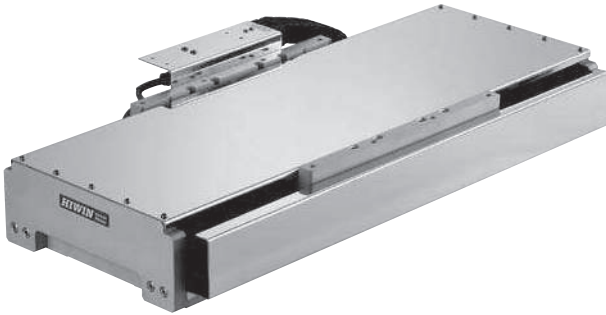
Positioning Systems

Linear Motor Stages

2.6 Linear Motor Stages LMX1E-C

Linear motor stages LMX1E-C are equipped with a coreless motor and well suited for applications with a high degree of synchronous operation requirements. They can also be used in cross tables. They are distinguished by their low profile design. The travel is measured via optical encoder incrementally. The linear motor stages LMX1E-C have very high dynamics and are available in overall lengths up to 4,000 mm.

- Max. acceleration 100 m/s²
- Max. speed 5 m/s
- Length up to 4,000 mm



* Dimensions C and D are customer-specific

Specifications for Linear Motor Stages LMX1E-C

Type (Order code) xxxx=Stroke [mm]	Motor Type	F _c [N]	F _p [N]	Mass of Slider [kg]	Length of forcer [mm]	v _{max} [m/s]	a _{max} [m/s ²]	Dimension A [mm]	Dimension B [mm]
LMX1E-CB5-1-xxxx-G200	LMC B5	90	270	2	178	3	50	178	80
LMX1E-CB6-1-xxxx-G200	LMC B6	110	330	3	208	3	50	178	80
LMX1E-CB8-1-xxxx-G200	LMC B8	145	435	4.2	272	3	50	178	80
LMX1E-CB5-1-xxxx-G200	LMC B5	90	270	2.3	178	3	50	178	92/101
LMX1E-CB6-1-xxxx-G200	LMC B6	110	330	3.3	208	3	50	178	92/101
LMX1E-CB8-1-xxxx-G200	LMC B8	145	435	4.5	272	3	50	178	92/101

Note: F_c = continuous force, 100% operating time
 F_p = peak force (1 s)
 Electric parameters for the linear motors: see page 46.
 Mass of slider includes forcer, forcer plate, guide blocks.

Positioning Systems

Linear Motor Stages

Dimensions and weight of the linear motor stage LMX1E-CB8 without cover

Stroke [mm]	Total length L [mm]	N	Mass [kg]
176	578	4	24.5
304	706	5	28
432	834	6	32
560	962	7	35.5
688	1090	8	39
816	1218	9	43
944	1346	10	46
1200	1602	12	53.5
1456	1858	14	61
1712	2114	16	68

