

PF20H

Hygienic flow sensor

PF20H-11.010.####.20#.0000.0

Overview

- SIP- capable without restrictions up to 150 °C / 24h
- Broad portfolio of process connections
- Flow and temperature measurement in a single sensor
- Compact and robust
- Available with IO-Link interface



Technical data

Performance characteristics

Down time at temperature step	< 10 s
Max. measuring error	± 2 % FSR , flow measurement ± 8 cm/s , flow measurement ± 1 °C , temperature measurement @ flow > 0 cm/s
Measuring range, flow	10 ... 400 cm/s
Measuring range, temperature	-25 ... 150 °C
Step response time	< 5 s

Process conditions

Process temperature	-25 ... 125 °C , flow measurement -25 ... 150 °C , temperature measurement @ flow > 0 cm/s
Process pressure	Refer to section "Operating conditions"

Process connection

Connection variants	Refer to section "Dimensional drawings"
Mounting position	Any, top, bottom, side
Wetted parts material	AISI 316L (1.4404)
Surface roughness wetted parts	Ra ≤ 0.8 µm

Ambient conditions

Operating temperature range	-25 ... 80 °C
Storage temperature range	-25 ... 80 °C
Degree of protection (EN 60529)	IP67 IP68 , 30 min. @ 1 mH2O IP69K , with appropriate cable
Humidity	≤ 100 % RH , condensing
Shock (EN 60068-2-27)	30 g / 11 ms, 6 impulses per axis and direction

Ambient conditions

Vibration (sinusoidal) (EN 60068-2-6)	5 g (10 ... 2000 Hz)
---------------------------------------	----------------------

Output signal

Current output	4 ... 20 mA
Voltage output	0 ... 10 V
Output type	Digital (push-pull) NPN PNP
Switching logic	Active high Active low Normally closed (NC) Normally open (NO)

Voltage drop	< 2 V, switching output
--------------	-------------------------

Current rating	100 mA , max.
----------------	---------------

Residual current	< 250 µA
------------------	----------

Short circuit protection	Yes
--------------------------	-----

Interface	IO-Link 1.1
-----------	-------------

Housing

Style	Compact transmitter
Overall size	Refer to section "Dimensional drawings"
Material	Stainless steel

Electrical connection

Connector	M12-A, 4-pin
-----------	--------------

Power supply

Voltage supply range	12 ... 32 V DC , with 2 x 4 ... 20 mA 18 ... 30 V DC , with IO-Link
----------------------	--

Power-up time	10 s , max.
---------------	-------------

Reverse polarity protection	Yes
-----------------------------	-----

Compliance and approvals

Hygiene	FDA compliant EHEDG EL Class I
---------	-----------------------------------

PF20H

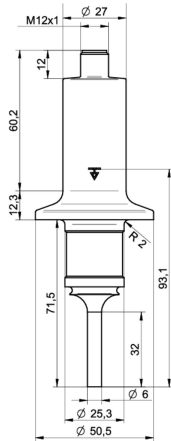
Hygienic flow sensor

PF20H-11.010.####.20.#.0000.0

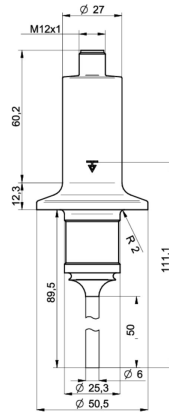
Operating conditions

Process connection	BCID	Process pressure (bar)
G 1/2 A hygienic	A03	-1 ... 100
G 1/2 A hygienic sealing	B03	-1 ... 10
BHC 3A DN 38	B01	-1 ... 68
Tri-Clamp Ø 34.0	C02	-1 ... 68
Tri-Clamp Ø 50.5	C04	-1 ... 68
Tri-Clamp Ø 64.0	C05	-1 ... 68
DIN 11851 (dairy pipe connection), DN 25	D01	-1 ... 40
DIN 11851 (dairy pipe connection), DN 40	D03	-1 ... 40
DIN 11851 (dairy pipe connection), DN 50	D04	-1 ... 25
Varivent® DN 25; 1" (Type F), Ø 50	V01	-1 ... 16
Varivent® DN 32 ... 125; 1 1/2" ... 6" (Type N), Ø 68	V02	-1 ... 16

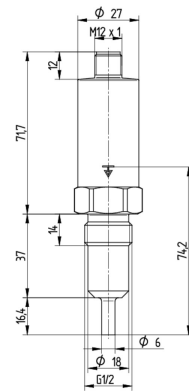
Dimensional drawings (mm)



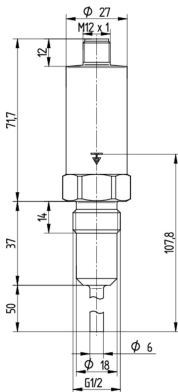
B01-B013
BHC 3A DN 38
Sensor length 32 mm (BCID: B01)



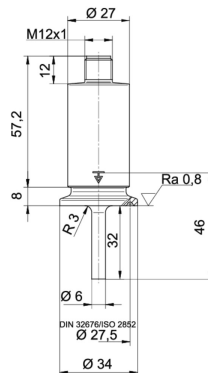
B01-B015
BHC 3A DN 38
Sensor length 50 mm (BCID: B01)



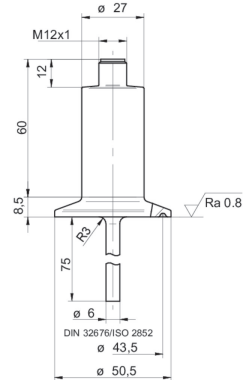
A03-A031 1/2 A hygienic Sensor length 16.4 mm (BCID: A03)



A03-A035
G 1/2 A hygienic
Sensor length 50 mm (BCID: A03)



C02-C023
Tri-Clamp Ø 34.0
Sensor length 32 mm (BCID: C02)



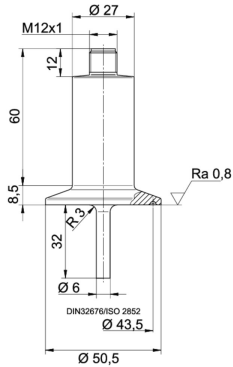
C04-C042
Tri-Clamp Ø 50.5
Sensor length 75 mm (BCID: C04)

PF20H

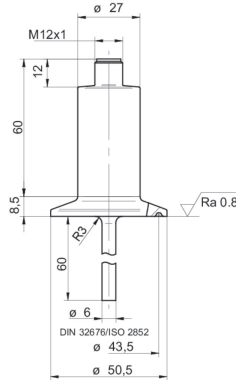
Hygienic flow sensor

PF20H-11.010.####.20.#.0000.0

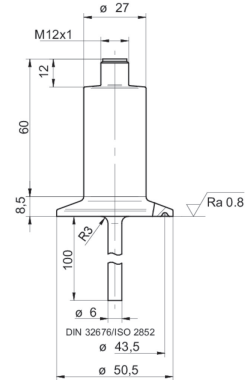
Dimensional drawings (mm)



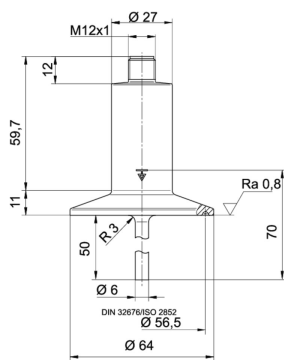
C04-C043
Tri-Clamp Ø 50.5
Sensor length 32 mm (BCID: C04)



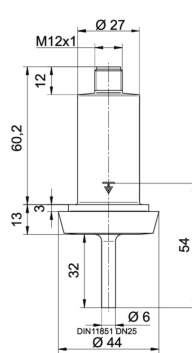
C04-C046
Tri-Clamp Ø 50.5
Sensor length 60 mm (BCID: C04)



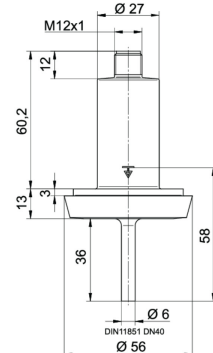
C04-C047
Tri-Clamp Ø 50.5
Sensor length 100 mm (BCID: C04)



C05-C055
Tri-Clamp Ø 64.0
Sensor length 50 mm (BCID: C05)



D01-D013
DIN 11851 (dairy pipe connection)
DN 25
Sensor length 32 mm (BCID: D01)



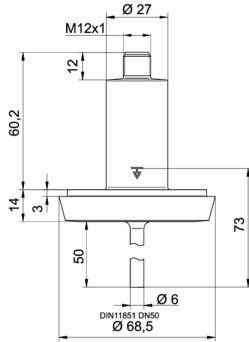
D03-D034
DIN 11851 (dairy pipe connection)
DN 40
Sensor length 36 mm (BCID: D03)

PF20H

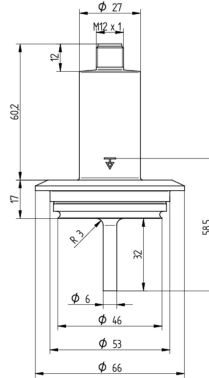
Hygienic flow sensor

PF20H-11.010.####.20.#.0000.0

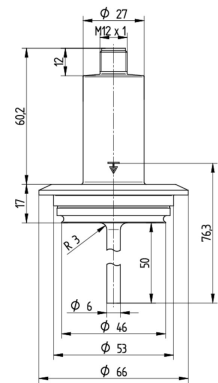
Dimensional drawings (mm)



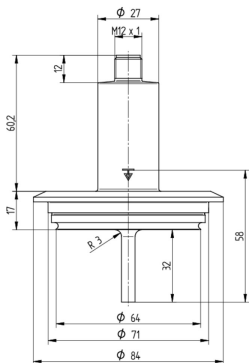
D04-D045
DIN 11851 (dairy pipe connection)
DN 50
Sensor length 50 mm (BCID: D04)



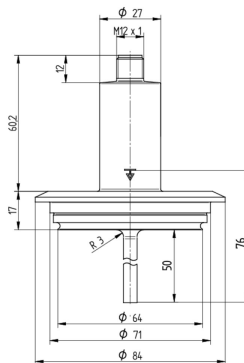
V01-V013
Varivent® DN 25; 1" (Type F)
Ø 50
Sensor length 32 mm (BCID: V01)



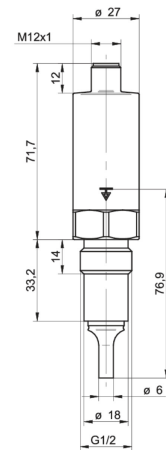
V01-V015
Varivent® DN 25; 1" (Type F)
Ø 50
Sensor length 50 mm (BCID: V01)



V02-V023
Varivent® DN 32 ... 125; 1 1/2" ... 6" (Type N)
Ø 68
Sensor length 32 mm (BCID: V02)



V02-V025
Varivent® DN 32 ... 125; 1 1/2" ... 6" (Type N)
Ø 68
Sensor length 50 mm (BCID: V02)



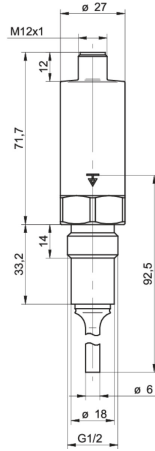
B03-B031
G 1/2 A hygienic sealing
Sensor length 16.4 mm (BCID: B03)

PF20H

Hygienic flow sensor

PF20H-11.010.####.20#.0000.0

Dimensional drawings (mm)



B03-B039
G 1/2 A hygienic sealing
Sensor length 30 mm (BCID: B03)

PF20H

Hygienic flow sensor

PF20H-11.010.####.20.#.0000.0

Electrical connection

Output signal	Equivalent circuit	Electrical connection	Function	Pin assignment
Multi-parameter output 4 ... 20 mA, 3-wire (flow) 4 ... 20 mA, 3-wire (temperature)			+Vs Iout (flow) Iout (temperature) GND (0 V) Frame ground	1 2 4 3 Plug thread
Programmable output Factory setting with IO-Link			+Vs SW1 (IO-Link) Iout GND (0 V) Frame ground	1 4 2 3 Plug thread
Programmable output Configuration programmable by customer			+Vs SW1 (IO-Link) Uout GND (0 V) Frame ground	1 4 2 3 Plug thread
Programmable output Configuration programmable by customer			+Vs SW1 (IO-Link) SW2 GND (0 V) Frame ground	1 4 2 3 Plug thread
Programmable output Configuration programmable by customer			+Vs SW1 (IO-Link) SW2 GND (0 V) Frame ground	1 4 2 3 Plug thread
Programmable output Configuration programmable by customer			+Vs SW1 (IO-Link) SW2 GND (0 V) Frame ground	1 4 2 3 Plug thread

Ordering information

Ordering key - Configuration possibilities see website

Product	PF20H	-	1	1	.	010	.	####	.	2	0	.	#	.	0	00	0	.	0	
Version	Version for Water																			1
Housing	Stainless steel, AISI 316L (1.4404)																			1
Electrical connection	M12-A, 4-pin, stainless steel					010														

2022-01-18 The product features and technical data specified do not express or imply any warranty. Technical modifications subject to change.

PF20H

Hygienic flow sensor

PF20H-11.010.####.20#.0000.0

Ordering information

Ordering key - Configuration possibilities see website

	PF20H	-	1	1	.	010	.	####	.	2	0	.	#	.	0	00	0	.	0	
Process connection																				
G 1/2 A hygienic (A03), Sensor length: 16.4 mm ⁽²⁾																				A031
G 1/2 A hygienic (A03), Sensor length: 50 mm ⁽²⁾																				A035
ISO 2852 (Tri-Clamp), DN 21.3, Ø 34.0 (C02), Sensor length: 32 mm ⁽²⁾																				C023
ISO 2852 (Tri-Clamp), DN 33.7; 38, Ø 50.5 (C04), Sensor length: 75 mm ⁽¹⁾																				C042
ISO 2852 (Tri-Clamp), DN 33.7; 38, Ø 50.5 (C04), Sensor length: 32 mm ⁽¹⁾																				C043
ISO 2852 (Tri-Clamp), DN 33.7; 38, Ø 50.5 (C04), Sensor length: 60 mm ⁽¹⁾																				C046
ISO 2852 (Tri-Clamp), DN 33.7; 38, Ø 50.5 (C04), Sensor length: 100 mm ⁽¹⁾																				C047
ISO 2852 (Tri-Clamp), DN 40; 51, Ø 64.0 (C05), Sensor length: 50 mm ⁽¹⁾																				C055
DIN 11851 (dairy pipe connection), DN 25 (D01), Sensor length: 32 mm ⁽¹⁾																				D013
DIN 11851 (dairy pipe connection), DN 40 (D03), Sensor length: 36 mm ⁽¹⁾																				D034
DIN 11851 (dairy pipe connection), DN 50 (D04), Sensor length: 50 mm ⁽¹⁾																				D045
Varivent® DN 32 ... 125; 1 1/2 ... 6 (Type N), Ø 68 (V02), Sensor length: 32 mm ⁽³⁾																				V023
Varivent® DN 32 ... 125; 1 1/2 ... 6 (Type N), Ø 68 (V02), Sensor length: 50 mm ⁽³⁾																				V025
Varivent® DN 25; 1 (Type F), Ø 50 (V01), Sensor length: 32 mm ⁽⁴⁾																				V013
Varivent® DN 25; 1 (Type F), Ø 50 (V01), Sensor length: 50 mm ⁽⁴⁾																				V015
BHC 3A DN 38 (B01), Sensor length: 32 mm ⁽³⁾																				B013
BHC 3A DN 38 (B01), Sensor length: 50 mm ⁽³⁾																				B015
G 1/2 A hygienic sealing, Sensor length: 16.4 mm ⁽²⁾																				B031
G 1/2 A hygienic sealing, Sensor length: 16.4 mm ⁽²⁾																				B039
Process connection material																				
AISI 316L (1.4404)											2									
Seal																				
None																				0
Output signal																				
Multi-parameter output, 2 x 4 - 20 mA (3-wire)																				0
Programmable output, IO-Link																				1
Explosion protection																				
Without																				0
Industrial approvals																				
Standard																				00
Special approvals																				
Standard																				0
Configuration																				
Factory settings																				0

PF20H

Hygienic flow sensor

PF20H-11.010.####.20#.0000.0

Ordering information

Ordering key - Configuration possibilities see website

- (1) EHEDG only with special gasket
- (2) EHEDG not included
- (3) EHEDG included
- (4) EHEDG not included, only for tank installation