



ISO 9001,  
ISO 14001,  
OHSAS 18001 CERTIFIED

 **SWITCHING POWER SUPPLY**

# INTRODUCTION

Lubi Electronics is an ISO 9001:2008 TUV certified organization dealing in Industrial Automation Products & Solutions. Lubi Electronics is committed to Design and Manufacture quality electronic products with competitive edge. Lubi is focused to excel in manufacturing of Switching Power supplies used for Industrial applications. Lubi has an experienced design and production team with latest design software and tools, in-house automated production line set up and highly reliable testing facility.

We aspire to become a preferred supplier of the products we manufacture with continuous increasing supply and consistent high quality. We aim to continue developing new products with value added engineering solutions and technology to keep pace with growing & changing market requirement. We will continue to develop innovative concepts and skill engineering to cater various industrial solutions.



# CERTIFICATES

CERTIFICATE ♦ CERTIFICADO ♦ CERTIFIKAT ♦ certifikat ♦ CERTIFICATE ♦ CERTIFICADO ♦ CERTIFIKAT ♦ certifikat	 <h2 style="text-align: center;">CERTIFICATE</h2> <p style="text-align: center;">The Certification Body of TUV SUD South Asia Private Limited certifies that</p> <div style="text-align: center;">  <p><b>LUBI ELECTRONICS</b> Sardar Patel Ring Road, Near Karai Gam Patia, Nasa Chioda, Dist.- Gandhinagar, Gujarat - 382 330, INDIA</p> </div> <p style="text-align: center;">has implemented a Quality Management System in accordance with <b>ISO 9001:2015</b> For Scope of</p> <p style="text-align: center;"><b>Design, Manufacture, Sales &amp; Service Of Control Panel, Solar P.V. Panel, Solar Pump &amp; Systems And Electronic Goods, Distribution, Application And After Sales Service Of Industrial Automation Products</b></p> <p style="text-align: center;">The certificate is valid From <b>2017-01-17</b> until <b>2020-01-16</b> Subject to successful completion of annual periodic audits The preservation of this Certificate shall be dependent on successful audit. Further conditions regarding the scope of this certificate may be obtained by contacting the certification body.</p> <p style="text-align: center;">Certificate Registration No. <b>99 168 03478</b> Date of Initial certification : <b>2008-01-17</b></p> <div style="display: flex; justify-content: space-around; align-items: center;">    </div> <p style="font-size: small; text-align: center;">TUV SUD South Asia Pvt. Ltd. • TUV SUD House • Sukh Vihar • Andher (East) • Mumbai - 400022 • Standalone • India</p>	 <h2 style="text-align: center;">CERTIFICATE</h2> <p style="text-align: center;">The Certification Body of TUV SUD South Asia Private Limited certifies that</p> <div style="text-align: center;">  <p><b>LUBI ELECTRONICS</b> Sardar Patel Ring Road, Near Karai Gam Patia, Nasa Chioda Dist. - Gandhinagar-382330, Gujarat, INDIA</p> </div> <p style="text-align: center;">has implemented an Environmental Management System in accordance with <b>ISO 14001:2015</b> For Scope of</p> <p style="text-align: center;"><b>DESIGN, MANUFACTURE, SALES &amp; SERVICE OF CONTROL PANEL, SOLAR P.V. PANEL, SOLAR PUMP &amp; SYSTEM AND ELECTRONIC GOODS, DISTRIBUTION, APPLICATION AND AFTER SALES SERVICE OF INDUSTRIAL AUTOMATION PRODUCTS</b></p> <p style="text-align: center;">The certificate is valid From <b>2015-01-31</b> until <b>2020-01-11</b> Subject to successful completion of annual periodic audits The preservation of this Certificate shall be dependent on successful audit. Further conditions regarding the scope of this certificate may be obtained by contacting the certification body.</p> <p style="text-align: center;">Certificate Registration No. <b>98 104 00218</b> Date of Initial certification : <b>2014-06-18</b></p> <div style="display: flex; justify-content: space-around; align-items: center;">    </div> <p style="font-size: small; text-align: center;">TUV SUD South Asia Pvt. Ltd. • TUV SUD House • Sukh Vihar • Andher (East) • Mumbai - 400022 • Standalone • India</p>	 <h2 style="text-align: center;">CERTIFICATE</h2> <p style="text-align: center;">The Certification Body of TUV SUD South Asia Private Limited certifies that</p> <div style="text-align: center;">  <p><b>LUBI ELECTRONICS</b> Sardar Patel Ring Road, Near Karai Gam Patia, Nasa Chioda, Dist.- Gandhinagar, Gujarat - 382 330, INDIA</p> </div> <p style="text-align: center;">has implemented an Occupational Health and Safety Management System in accordance with <b>OHSAS 18001:2007</b> For Scope of</p> <p style="text-align: center;"><b>Design, Manufacture, Sales &amp; Service Of Control Panel, Solar P.V. Panel, Solar Pump &amp; System And Electronic Goods, Distribution, Application And After Sales Service Of Industrial Automation Products.</b></p> <p style="text-align: center;">The certificate is valid From <b>2017-01-12</b> until <b>2020-01-11</b> Subject to successful completion of annual periodic audits The preservation of this Certificate shall be dependent on successful audit. Further conditions regarding the scope of this certificate may be obtained by contacting the certification body.</p> <p style="text-align: center;">Certificate Registration No. <b>99 116 90633</b> Date of Initial certification : <b>2014-06-18</b></p> <div style="display: flex; justify-content: space-around; align-items: center;">    </div> <p style="font-size: small; text-align: center;">TUV SUD South Asia Pvt. Ltd. • TUV SUD House • Sukh Vihar • Andher (East) • Mumbai - 400022 • Standalone • India</p>
---	---	--	--

# MANUFACTURING

## PRODUCTION PROCESS FLOW



SMT LINE



PCB ASSEMBLY



WAVE SOLDER



LABELING & PACKING



QUALITY CONTROL



BOX ASSEMBLY

## MANUFACTURING FACILITIES



SMT LINE



WAVE SOLDER MACHINE

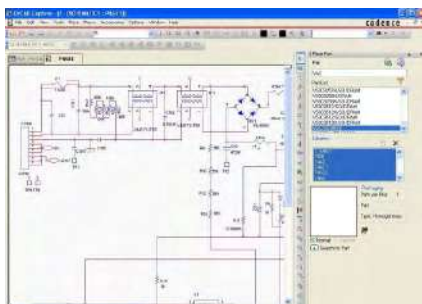


BURN-IN TEST

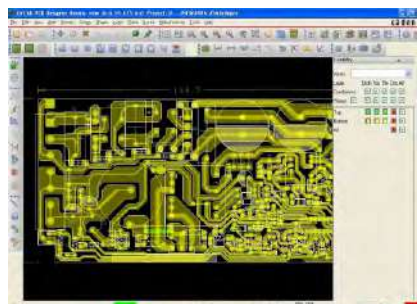


ENVIRONMENTAL CHAMBER

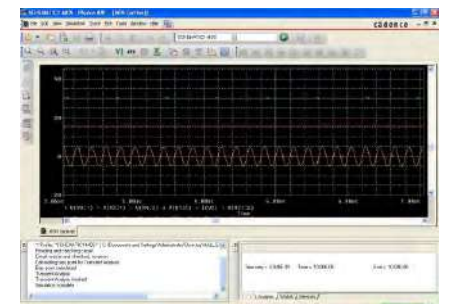
## DESIGN TOOLS



SCHEMATIC



PCB LAYOUT



SOFTWARE SIMULATION

# PRODUCT OVERVIEW



<b>Standard DIN rail Series</b>	<b>Single Output Series</b> : 75W, 120W, 150W, 240W <b>Smart SMPS Series</b> : 120W <b>SMPS with Display</b> : 120W
<b>Panel Mount Series</b>	<b>Single Output Series</b> : 15W, 25W, 50W, 100W, 150W, 240W, 350W, 480W <b>Dual Output Series</b> : 65W, 125W
<b>Eco DIN rail Series</b>	<b>Single Output Series</b> : 15W, 25W, 50W, 100W, 150W, 240W, 350W <b>Dual Output Series</b> : 65W, 125W

## APPLICATION



### Smart Infrastructure / IoT

- Elevator
- Escalator
- Data center
- HVAC



### LED Signage/ Display LED Lighting



### Factory Automation

- Automation process
- Automation engineering



### Warehouse Automation

- Automatic door
- Vending machine
- ATM



### OEM / ODM

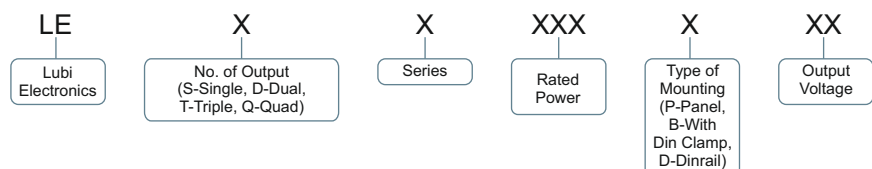
- Pharma/Lab Equipment
- Packaging & Textile
- Automobile



### Home Automation

- Electrical appliances
- Home automation controller

## Ordering Information



# 75~240W Single Output Series



## LESA75/LESA120/LESA150/ LESA240

Standard DINrail

### FEATURES

- Universal AC input / Full range
- Protections: Short circuit / Overload / Over voltage
- Cooling by free air convection
- High efficiency, long life and high reliability
- LED indicator for power on
- Low Ripple & Noise

### INPUT SPECIFICATIONS

AC Input Voltage	100V~264VAC
AC Input Current	<1.8A/230V AC
DC Input Voltage	150 ~ 350V DC
Max Inrush Current	40A COLD START
Leakage Current	<2mA/240V AC

### OUTPUT SPECIFICATIONS

MODEL NUMBER	LESA75D			LESA120D			LESA150D	LESA240D	
Output Voltage	12V	24V	48V	12V	24V	48V	24V	24V	48V
Output Current	6A	3A	1.5A	10A	5A	2.5A	6.25A	10A	5A
Output Power	75W			120W			150W	240W	
Output Voltage Adj. Range	±10% By Potentiometer								
Efficiency	>85.00%			>85.00%			>85.00%	>85.00%	
Line Regulation	+/- 0.3%			+/- 0.2%			+/- 0.2%	+/- 0.2%	
Load Regulation	+/- 0.5%			+/- 0.5%			+/- 0.5%	+/- 0.5%	
Ripple / Noise	150mVp-p			150mVp-p			150mVp-p	150mVp-p	
Setup Time / Rise Time	800mS / 50mS								
Hold Time	20mS								
Dimension (L x W x H)	114 x 40 x 126mm			114 x 40 x 126mm			114 x 40 x 126mm	114 x 63 x 126mm	

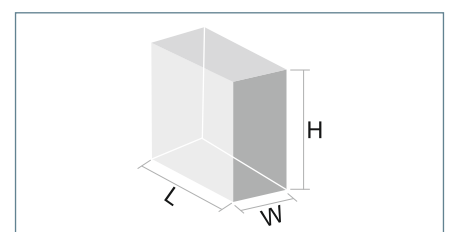
### PROTECTION

Short Circuit	Shut Down Output Voltage, Re-power On To Recover
Over Load	110~150% Rated Output Power
Over Voltage	115% ~ 145%

### MODEL INFORMATION

Model Number	Output Voltage	Output Current	Mounting Style
LESA75D12*	12V	6A	DIN-rail Mount
LESA75D24	24V	3A	DIN-rail Mount
LESA75D48*	48V	1.5A	DIN-rail Mount
LESA120D12	12V	10A	DIN-rail Mount
LESA120D24	24V	5A	DIN-rail Mount
LESA120D48	48V	2.5A	DIN-rail Mount
LESA150D24	24V	6.25A	DIN-rail Mount
LESA240D24	24V	10A	DIN-rail Mount
LESA240D48	48V	5A	DIN-rail Mount

### DIMENSION REFERENCE



\*Upcoming Models

# 120W Single Output Series - Smart Programmable



## LESS120

Standard DINrail

### FEATURES

- Universal AC input / Full range
- Output Voltage, Current, Peak current, Power Indication
- Programmable Output under voltage & Current Limit Function
- Protections : Short circuit / Overload / Over voltage
- Cooling by free air convection
- High efficiency, long life and high reliability
- Low Ripple & Noise

### INPUT SPECIFICATIONS

AC Input Voltage	100V~264VAC
AC Input Current	<1.3A/230V AC
DC Input Voltage	150 ~ 350V DC
Max Inrush Current	40A COLD START
Leakage Current	<2mA/240V AC

### OUTPUT SPECIFICATIONS

MODEL NUMBER	LESS120D
Output Voltage	24V
Output Current	5A
Output Power	120W
Output Voltage Adj. Range	±10% By Potentiometer
Efficiency	>85.00%
Line Regulation	+/- 0.3%
Load Regulation	+/- 0.5%
Ripple / Noise	150mVp-p
Setup Time / Rise Time	800mS / 50mS
Hold Time	20mS
Dimension (L x W x H)	114 x 63 x 126mm

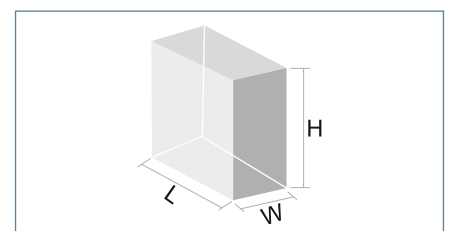
### PROTECTION

Short Circuit	Shut Down Output Voltage, Re-power On To Recover
Over Load	110~150% Rated Output Power
Over Voltage	115% ~ 145%

### MODEL INFORMATION

Model Number	Output Voltage	Output Current	Mounting Style
LESS120D24	24V	5A	DIN-rail Mount

### DIMENSION REFERENCE



# 120W Single Output Series - With Display



## LESD120

Standard DINrail

### FEATURES

- Output Voltage Indication On 7 - Segment Display
- Universal AC input / Full range
- Protections: Short circuit / Overload / Over voltage
- Cooling by free air convection
- High efficiency, long life and high reliability
- LED indicator for power on
- Low Ripple & Noise

### INPUT SPECIFICATIONS

AC Input Voltage	100V~264VAC
AC Input Current	<1.3A/230V AC
DC Input Voltage	150 ~ 350V DC
Max Inrush Current	40A COLD START
Leakage Current	<2mA/240V AC

### OUTPUT SPECIFICATIONS

MODEL NUMBER	LESD120D
Output Voltage	24V
Output Current	5A
Output Power	120W
Output Voltage Adj. Range	±10% By Potentiometer
Efficiency	>85.00%
Line Regulation	+/- 0.3%
Load Regulation	+/- 0.5%
Ripple / Noise	150mVp-p
Setup Time / Rise Time	800mS / 50mS
Hold Time	20mS
Dimension (L x W x H)	114 x 40 x 126mm

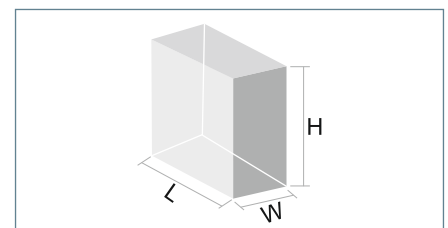
### PROTECTION

Short Circuit	Shut Down Output Voltage, Re-power On To Recover
Over Load	110~150% Rated Output Power
Over Voltage	115% ~ 145%

### MODEL INFORMATION

Model Number	Output Voltage	Output Current	Mounting Style
LESD120D24	24V	5A	DIN-rail Mount

### DIMENSION REFERENCE



# 15~25W Single Output Series



## LESA15/LESA25

Panel Mount / Economical DINrail

### FEATURES

- Universal AC input / Full range
- Low Ripple & Noise
- Protections: Short circuit / Overload / Over voltage
- Cooling by free air convection
- High efficiency, long life and high reliability
- LED indicator for power on
- 100% Full Load Burn In Test
- Available with Din-rail Mount Bracket

### INPUT SPECIFICATIONS

AC Input Voltage	100~264VAC
AC Input Current	<1A/230V AC
DC Input Voltage	124~370V DC
Max Inrush Current	40A COLD START
Leakage Current	<2mA/240V AC

### OUTPUT SPECIFICATIONS

MODEL NUMBER	LESA15P5	LESA15P12	LESA15P24	LESA25P5	LESA25P12	LESA25P24
Output Voltage	5V	12V	24V	5V	12V	24V
Output Current	3A	1.3A	0.7A	5A	2.2A	1.1A
Output Power	15W			25W		
Output Voltage Adj. Range	±10% By Potentiometer					
Efficiency	>80.00%					
Line Regulation	+/- 0.3%					
Load Regulation	+/- 0.5%					
Ripple / Noise	150mVp-p					
Setup Time / Rise Time	800mS / 50mS					
Hold Time	20mS					
Dimension (L x W x H)	86 x 58 x 32mm					

### PROTECTION

Short Circuit	Shut Down Output Voltage, Re-power On To Recover
Over Load	110~150% Rated Output Power
Over Voltage	115% ~ 135%

### MODEL INFORMATION

Model Number	Output Voltage	Output Current	Mounting Style
LESA15P5	5V	3A	Panel Mount
LESA15B5	5V	3A	With Din-rail Bracket
LESA15P12	12V	1.3A	Panel Mount
LESA15B12	12V	1.3A	With Din-rail Bracket
LESA15P24	24V	0.7A	Panel Mount
LESA15B24	24V	0.7A	With Din-rail Bracket
LESA25P5	5V	5A	Panel Mount
LESA25B5	5V	5A	With Din-rail Bracket
LESA25P24	24V	1.1A	Panel Mount
LESA25B24	24V	1.1A	With Din-rail Bracket
LESA25P12*	12V	2.2A	Panel Mount
LESA25B12*	12V	2.2A	With Din-rail Bracket

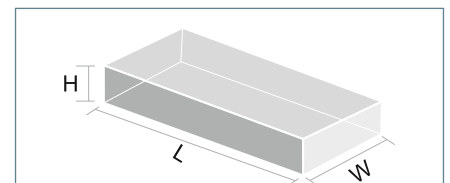
Panel Mount



With Din-rail Bracket



Dimension Reference



\*Upcoming Models



# 50W Single Output Series



## LESA50

Panel Mount / Economical DINrail

### FEATURES

- Universal AC input / Full range
- Low Ripple & Noise
- Protections: Short circuit / Overload / Over voltage
- Cooling by free air convection
- High efficiency, long life and high reliability
- LED indicator for power on
- 100% Full Load Burn In Test
- Available with Din-rail Mount Bracket

### INPUT SPECIFICATIONS

AC Input Voltage	100~264VAC(LESA50P), 180~264 VAC (LESA60P)
AC Input Current	<1.2A/230V AC
DC Input Voltage	124~370V DC
Max Inrush Current	40A COLD START
Leakage Current	<2mA/240V AC

### OUTPUT SPECIFICATIONS

MODEL NUMBER	LESA50P5	LESA50P12	LESA50P15	LESA50P24	LESA50P48
Output Voltage	5V	12V	15V	24V	48V
Output Current	10A	4.2A	3.4A	2.2A	1.1A
Output Power	50W				
Output Voltage Adj. Range	±10% By Potentiometer				
Efficiency	>80.00%				
Line Regulation	+/- 0.3%				
Load Regulation	+/- 0.5%				
Ripple / Noise	150mVp-p				
Setup Time / Rise Time	800mS / 50mS				
Hold Time	20mS				
Dimension (L x W x H)	111 x 80 x 33mm				

### PROTECTION

Short Circuit	Shut Down Output Voltage, Re-power On To Recover
Over Load	110~150% Rated Output Power
Over Voltage	115% ~ 135%

### MODEL INFORMATION

Model Number	Output Voltage	Output Current	Mounting Style
LESA50P5	5V	10A	Panel Mount
LESA50B5	5V	10A	With Din-rail Bracket
LESA50P12	12V	4.2A	Panel Mount
LESA50B12	12V	4.2A	With Din-rail Bracket
LESA50P15	15V	3.4A	Panel Mount
LESA50B15	15V	3.4A	With Din-rail Bracket
LESA50P24	24V	2.2A	Panel Mount
LESA50B24	24V	2.2A	With Din-rail Bracket
LESA50P48	48V	1.1A	Panel Mount
LESA50B48	48V	1.1A	With Din-rail Bracket

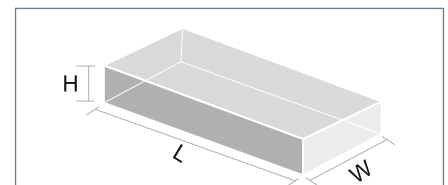
Panel Mount



With Din-rail Bracket



Dimension Reference



# 100W Single Output Series



## LESA100/LESB100

Panel Mount / Economical DINrail

### FEATURES

- Low Ripple & Noise
- Protections: Short circuit / Overload / Over voltage
- Cooling by free air convection
- High efficiency, long life and high reliability
- LED indicator for power on
- 100% Full Load Burn In Test
- Available with Din-rail Mount Bracket

### INPUT SPECIFICATIONS

AC Input Voltage	110V / 230V AC SELECTABLE BY SWITCH
AC Input Current	<1.2A/230V AC
Max Inrush Current	40A COLD START
Leakage Current	<2mA/240V AC

### OUTPUT SPECIFICATIONS

MODEL NUMBER	LESA100P12	LESA100P24	LESB100P24(Compact Model)
Output Voltage	12V	24V	24V
Output Current	8.5A	4.5A	4.5A
Output Power	100W	100W	100W
Output Voltage Adj. Range	±10% By Potentiometer		
Efficiency	>80.00%	>80.00%	>80.00%
Line Regulation	+/- 0.3%	+/- 0.3%	+/- 0.3%
Load Regulation	+/- 0.5%	+/- 0.5%	+/- 0.5%
Ripple / Noise	150mVp-p	150mVp-p	150mVp-p
Setup Time / Rise Time	800mS / 50mS		
Hold Time	20mS		
Dimension (L x W x H)	160 x 98 x 40mm	160 x 98 x 40mm	130 x 98 x 40mm

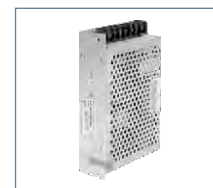
### PROTECTION

Short Circuit	Shut Down Output Voltage, Re-power On To Recover
Over Load	110~150% Rated Output Power
Over Voltage	115% ~ 135%

### MODEL INFORMATION

Model Number	Output Voltage	Output Current	Mounting Style
LESA100P12	12V	8.5A	Panel Mount
LESA100B12	12V	8.5A	With Din-rail Bracket
LESA100P24	24V	4.5A	Panel Mount
LESA100B24	24V	4.5A	With Din-rail Bracket
LESB100P24	24V	4.5A	Panel Mount
LESB100B24	24V	4.5A	With Din-rail Bracket

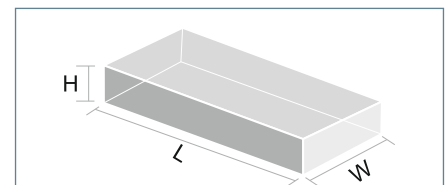
Panel Mount



With Din-rail Bracket



Dimension Reference



# 150W Single Output Series

## LESB150

Panel Mount / Economical DINrail

### FEATURES

- Universal AC input / Full range
- Protections: Short circuit / Overload / Over voltage
- Cooling by free air convection
- High efficiency, long life and high reliability
- LED indicator for power on
- Ultra Compact & 1U Low Profile
- Available with Din-rail Mount Bracket

### INPUT SPECIFICATIONS

AC Input Voltage	100 ~ 264 VAC
AC Input Current	<1.8A/230V AC
Max Inrush Current	60A COLD START
Leakage Current	<2mA/240V AC

### OUTPUT SPECIFICATIONS

MODEL NUMBER	LESB150P12	LESB150P24	LESB150P36	LESB150P48
Output Voltage	12V	24V	36V	48V
Output Current	12.5A	6.25A	4.3A	3.3A
Output Power	150W	150W	150W	150W
Output Voltage Adj. Range	±10% By Potentiometer			
Efficiency	>80.00%			
Line Regulation	+/- 0.2%			
Load Regulation	+/- 0.5%			
Ripple / Noise	150mVp-p			
Setup Time / Rise Time	800mS / 50mS			
Hold Time	20mS			
Dimension (L x W x H)	159 x 97 x 30mm			

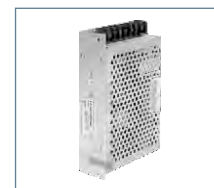
### PROTECTION

Short Circuit	Shut Down Output Voltage, Re-power On To Recover
Over Load	110~150% Rated Output Power
Over Voltage	115% ~ 135%

### MODEL INFORMATION

Model Number	Output Voltage	Output Current	Mounting Style
LESB150P12	12V	12.5A	Panel Mount
LESB150B12	12V	12.5A	With Din-rail Bracket
LESB150P24	24V	6.25A	Panel Mount
LESB150B24	24V	6.25A	With Din-rail Bracket
LESB150P36	36V	4.3A	Panel Mount
LESB150B36	36V	4.3A	With Din-rail Bracket
LESB150P48	48V	3.3A	Panel Mount
LESB150B48	48V	3.3A	With Din-rail Bracket

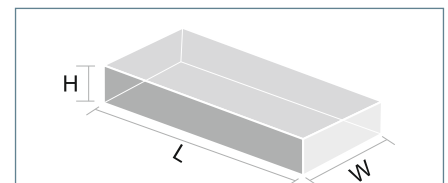
Panel Mount



With Din-rail Bracket



Dimension Reference



# 240W Single Output Series



## LESA240

Panel Mount / Economical DINrail

### FEATURES

- Universal AC input range
- Built-in active PFC function
- Protection : Short Circuit, Over Voltage, Over Load
- Forced air cooling by built-in DC Fan
- 100% Full Load Burn In Test
- Available with Din-rail Mount Bracket

### INPUT SPECIFICATIONS

AC Input Voltage	100~264VAC
AC Input Current	<1.8A/230V AC
DC Input Voltage	124~370V DC
Max Inrush Current	40A COLD START
Leakage Current	<2mA/240V AC

### OUTPUT SPECIFICATIONS

MODEL NUMBER	LESA240P12	LESA240P15	LESA240P24	LESA240P48
Output Voltage	12V	15V	24V	48V
Output Current	20A	16A	10A	5A
Output Power	240W	240W	240W	240W
Output Voltage Adj. Range	±10% By Potentiometer			
Efficiency	>85.00%			
Line Regulation	+/- 0.3%			
Load Regulation	+/- 0.5%			
Ripple / Noise	150mVp-p			
Setup Time / Rise Time	800mS / 50mS			
Hold Time	20mS			
Dimension (L x W x H)	190 x 93 x 50mm			

### PROTECTION

Short Circuit	Shut Down Output Voltage, Re-power On To Recover
Over Load	110~150% Rated Output Power
Over Voltage	115% ~ 145%

### MODEL INFORMATION

Model Number	Output Voltage	Output Current	Mounting Style
LESA240P12	12V	20A	Panel Mount
LESA240B12	12V	20A	With Din-rail Bracket
LESA240P15	15V	16A	Panel Mount
LESA240B15	15V	16A	With Din-rail Bracket
LESA240P24	24V	10A	Panel Mount
LESA240B24	24V	10A	With Din-rail Bracket
LESA240P48	48V	5A	Panel Mount
LESA240B48	48V	5A	With Din-rail Bracket

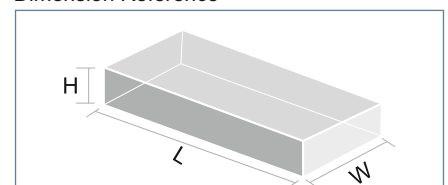
Panel Mount



With Din-rail Bracket



Dimension Reference



# 350W Single Output Series



## LESA350

Panel Mount / Economical DINrail

### FEATURES

- Protection : Short Circuit, Over Voltage, Over Load
- Forced air cooling by built-in DC Fan
- 100% Full Load Burn In Test
- Ultra Compact & 1U Low Profile
- Available with Din-rail Mount Bracket

### INPUT SPECIFICATIONS

AC Input Voltage	110V / 230V AC SELECTABLE BY SWITCH
AC Input Current	<3.4A/230V AC
DC Input Voltage	150 / 370V DC
Max Inrush Current	60A COLD START
Leakage Current	<2mA/240V AC

### OUTPUT SPECIFICATIONS

MODEL NUMBER	LESA350P12	LESA350P15	LESA350P24	LESA350P36	LESA350P48
Output Voltage	12V	15V	24V	36V	48V
Output Current	29A	23.2A	14.6A	9.7A	7.3A
Output Power	350W				
Output Voltage Adj. Range	±10% By Potentiometer				
Efficiency	>85.00%				
Line Regulation	+/- 0.3%				
Load Regulation	+/- 0.5%				
Ripple / Noise	150mVp-p				
Setup Time / Rise Time	800mS / 50mS				
Hold Time	20mS				
Dimension (L x W x H)	215 x 115 x 30mm				

### PROTECTION

Short Circuit	Shut Down Output Voltage, Re-power On To Recover
Over Load	110~150% Rated Output Power
Over Voltage	115% ~ 145%

### MODEL INFORMATION

Model Number	Output Voltage	Output Current	Mounting Style
LESA350P12*	12V	29A	Panel Mount
LESA350B12*	12V	29A	With Din-rail Bracket
LESA350P15	15V	23.2A	Panel Mount
LESA350B15	15V	23.2A	With Din-rail Bracket
LESA350P24	24V	14.6A	Panel Mount
LESA350B24	24V	14.6A	With Din-rail Bracket
LESA350P36*	36V	9.7A	Panel Mount
LESA350B36*	36V	9.7A	With Din-rail Bracket
LESA350P48*	48V	7.3A	Panel Mount
LESA350B48*	48V	7.3A	With Din-rail Bracket

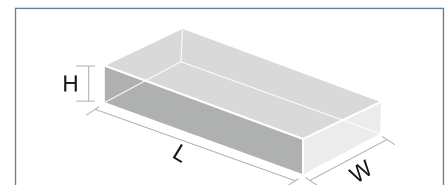
Panel Mount



With Din-rail Bracket



Dimension Reference



\*Upcoming Models

# 480W Single Output Series



## LESA480

Panel Mount

### FEATURES

- Built-in active PFC function
- Protection : Short Circuit, Over Voltage, Over Load
- Forced air cooling by built-in DC Fan
- 100% Full Load Burn In Test

### INPUT SPECIFICATIONS

AC Input Voltage	180V~240VAC
AC Input Current	<4.3A/230V AC
DC Input Voltage	240 ~ 300V DC
Max Inrush Current	60A COLD START
Leakage Current	<2mA/240V AC

### OUTPUT SPECIFICATIONS

MODEL NUMBER	LESA480P24	LESA480P48
Output Voltage	24V	48V
Output Current	20A	10A
Output Power	480W	480W
Output Voltage Adj. Range	±10% By Potentiometer	
Efficiency	>75.00%	>75.00%
Line Regulation	+/- 0.3%	+/- 0.2%
Load Regulation	+/- 0.5%	+/- 0.5%
Ripple / Noise	150mVp-p	150mVp-p
Setup Time / Rise Time	800mS / 50mS	
Hold Time	20mS	
Dimension (L x W x H)	241 x 124 x 65mm	

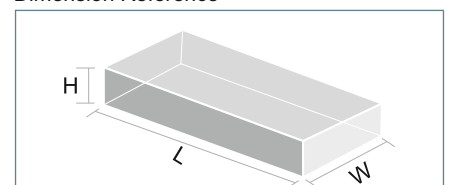
### PROTECTION

Short Circuit	Shut Down Output Voltage, Re-power On To Recover
Over Load	110~150% Rated Output Power
Over Voltage	115% ~ 145%

Panel Mount



Dimension Reference



### MODEL INFORMATION

Model Number	Output Voltage	Output Current	Mounting Style
LESA480P24	24V	20A	Panel Mount
LESA480P48	48V	10A	Panel Mount

# DUAL Output Series



## LEDA65/LEDA125PC

Panel Mount / Economical DINrail

### FEATURES

- Protections: Short circuit / Overload / Over voltage
- 100% Full Load Burn In Test
- Cooling by free air convection
- High efficiency, long life and high reliability
- LED indicator for power on
- Low Ripple & Noise
- Available with Din-rail Mount Bracket

### INPUT SPECIFICATIONS

AC Input Voltage	100~264VAC (LEDA65P), 180~264VAC (LEDA125PC)
AC Input Current	<1.3A/230V AC
DC Input Voltage	240 ~ 300V DC
Max Inrush Current	40A COLD START
Leakage Current	<2mA/240V AC

### OUTPUT SPECIFICATIONS

MODEL NUMBER	LEDA65PA		LEDA65PB		LEDA125PC**	
Output Voltage	12V(CH-1)	5V(CH-2)	24V(CH-1)	5V(CH-2)	24V(CH-1)	12V(CH-2)
Output Current	4A	3A	2A	4V	3.7A	3.7A
Output Power	65W		65W		125W	
Output Voltage Adj. Range	±10% By Potentiometer					
Efficiency	>80.00%		>80.00%		>80.00%	
Line Regulation	+/- 0.3%		+/- 0.3%		+/- 0.2%	
Load Regulation	+/- 0.5%		+/- 0.5%		+/- 0.5%	
Ripple / Noise	150mVp-p		150mVp-p		150mVp-p	
Setup Time / Rise Time	800mS / 50mS					
Hold Time	20mS					
Dimension (L x W x H)	130 x 98 x 40mm		130 x 98 x 40mm		199 x 98 x 40mm	

### PROTECTION

Short Circuit	Shut Down Output Voltage, Re-power On To Recover
Over Load	110~150% Rated Output Power
Over Voltage	115% ~ 145%

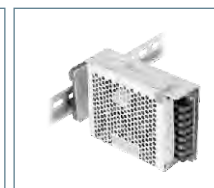
### MODEL INFORMATION

Model Number	Channel-1 Output		Channel-2 Output		Mounting Style
	Voltage	Current	Voltage	Current	
LEDA65PA	12V	4A	5V	3A	Panel Mount
LEDA65BA	12V	4A	5V	3A	With Din-rail Bracket
LEDA65PB	24V	2A	5V	4A	Panel Mount
LEDA65BB	24V	2A	5V	4A	With Din-rail Bracket
LEDA125PC	24V	3.7A	12V	3.7A	Panel Mount
LEDA125BC	24V	3.7A	12V	3.7A	With Din-rail Bracket

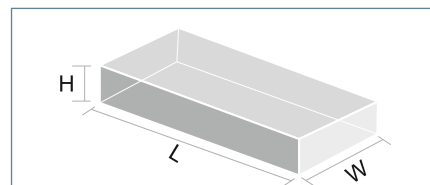
Panel Mount



With Din-rail Bracket



Dimension Reference



\*\*Non CE Models



## Lubi Electronics

Sardar Patel Ring Road, Nr. Karai Gam Patia, Nana Chiloda, Dist. : Gandhinagar - 382 330.

Tel. : +91-79-6674 5300 • Fax : +91-79-6674 5599

E-mail : [info@lubielectronics.com](mailto:info@lubielectronics.com) • Website : [www.lubielectronics.com](http://www.lubielectronics.com), [www.lubisolar.com](http://www.lubisolar.com)

### BRANCH OFFICE

#### VAPI

104-A, Platinum Mall, Plot No. Cm/13, Opp. V.I.A. Ground,  
G.I.D.C. Vapi - 396 195. District : Valsad, Gujarat. INDIA  
Tel. : + 91 - 260 - 2425 307

#### MUMBAI

405, Sangeet Plaza, Opp. Marol Fire Brigade, Marol Maroshi Road,  
Andheri (E), MUMBAI - 400 059.  
Tel. : + 91 - 22 - 6704 2570 / 2925 7315

#### PUNE

Breman Business Center, Off. No.301, Nr. City International School,  
Opp. Breman Square, University Road, Aundh Pune - 411 007.  
Tel. : + 91 - 20 - 2588 0583

#### DELHI

202, 2th Floor, Ajit Singh House, 12, Commercial Complex,  
Yusuf Sarai, New Delhi. 110 049.  
Tel. : + 91-11-4608 5120

#### LUDHIANA

BXX1/14436, Nr. Dada Motors, Besides HDFC Bank,  
Kalsinagar, G.T.Road, Ludhiana - 141 003.  
Tel. : + 91 - 161 - 2535 342

#### BANGALORE

"Sri Chakra" #30/25/1, 1st Floor, New Ring Road,  
Malagala, 2nd Stage, Nagarabavi, Bangalore-560072, Karnataka.  
Tel. : + 91 - 078150 18411

#### CHENNAI

#3, 1st Floor, Vishalakshi Street, Balavinayagar Nagar,  
Arumbakkam, Chennai - 600 106.  
Tel. : + 91 - 44 - 6459 8855 • Fax : + 91 - 44 - 4355 6630

#### COIMBATORE

SF 489/2 Thiru Nagar 3rd Street,  
Selvapuram By-Pass Road, Coimbatore - 641026.  
Tel. : + 91-422-6555 886 • Service No. : +91 - 422 - 2340 111

#### HYDERABAD

Shed No. - 21, Phase - 1, TCIE, Balanagar,  
Hyderabad - 500 037.  
Tel. : + 91 - 40 - 4007 3424

#### KOLKATA

Shed No. C-01, Ground Floor, 147, Nigunj Road,  
Hind Ceramic Compound, P.S. Belgjoria, Kolkata - 700 056.  
Tel. : + 91 - 90819 03883