

iFactory RTM Gateway



Features

Gateway Solution Ready Package

- Intel® Atom™ E3825/Intel® Celeron™ J1900 processor with 4GB DDR3L onboard memory
- Supports data preprocessing and increase the accuracy
- Easy configuration and simple dashboard for real time monitoring
- Quick connect with Advantech iFactory's cloud solutions through MQTT.
- Supports event and alarm setting

WISE-EdgeLink

- Preinstalled WISE-EdgeLink 300 tags
- Secure Data Conversion for Integrating Data with Third-Party Systems
- Plug-and-Play cloud access for rapid deployment
- Optimizing Efficiency with Connected Equipment

Introduction

iFactory RTM (Real-time Monitoring) Gateway is an IIoT gateway solution which enables sensors and data to communicate with each other based on the supported protocols. Through the easy configuration of the iFactory/RTM data acquisition software, you can create a simple visual dashboard which monitors real time data – allowing the user to perform efficient actions. iFactory RTM Gateway also does data aggregation and preprocessing at the gateway layer which reduces unnecessary relays to the cloud, thereby lowering overall solution cost. Using WISE-EdgeLink protocols, you can acquire the raw data from various sensors and devices. We also provide a total solution that allows you to upload preprocessed data through iFactory/RTM to our cloud solution through MQTT.

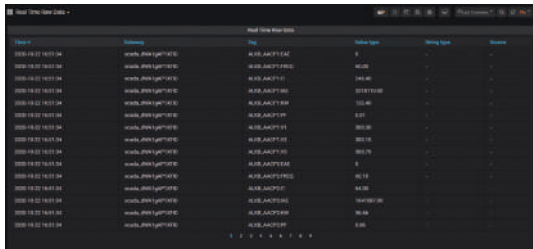
Key Functions

iFactory/RTM

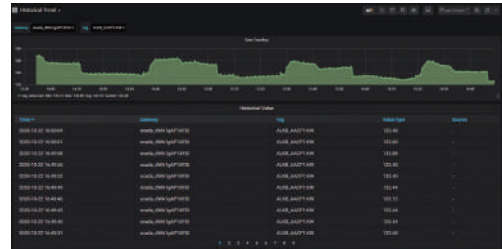
- Web Gateway user interface for remote setting and maintenance
- Simple dashboard for real time monitoring
- Quick connect with Advantech iFactory's cloud solutions through MQTT
- Provide simple event and alarm setting
- Integrated WISE-EdgeLink which can supports 200+ device drivers
- Lower data transition volume to cloud and save the storage cost.
- 7 days for historical data tracing
- Software upgrade easy because the Docker design.
- Support 7 days broken-point continuingly-transferring to cloud

WISE-EdgeLink

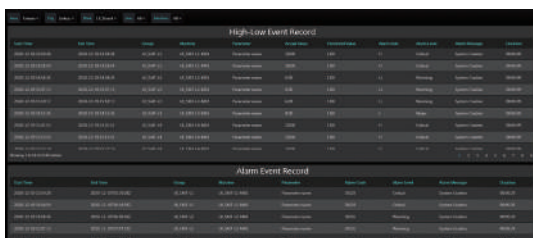
- Support data acquisition like I/O drivers, WISE-EdgeLink benefits data management, user tags and system tags.
- Support open VPN, active connection to WebAccess, store and forward and Protocol connection.
- Support project encryption, whitelisting, SSL encryption and data authority management.
- Support event hub for SMS/email alerts, SoftLogic runtime and data pretreatment
- Lightweight gateway software data uploads from edge to cloud



Real-time raw data



Historical Trend

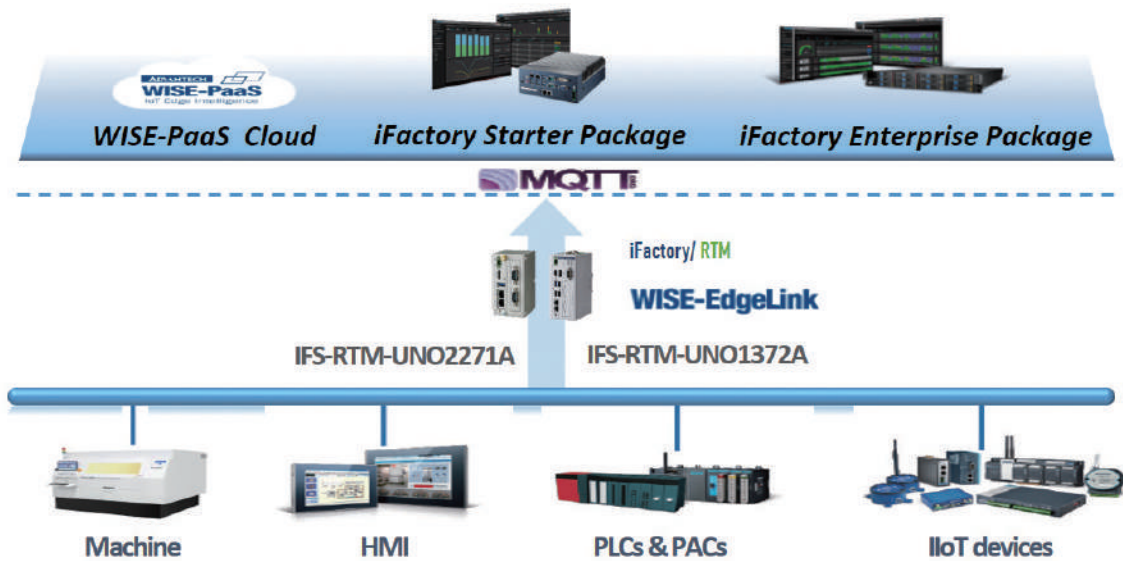


Event and Alarm Management



Customized Dashboard

iFactory RTM Gateway



Selection of Gateway Service

Part Number	IFS-RTM-UNO2271A	IFS-RTM-UNO1372A
SRP Software	Operation System	AdvLinuxTU
	User Interface	Character User Interface (Command-Line Interface)
	Software	iFactory/RTM 100 tags/s, max 300 tags/3s (Suggested) WISE-EdgeLink 300 tags (Suggested)
	Container Tech	Docker on Ubuntu
	Database	InfluxDB Version 1.8 & Mongo Version 4
	Customized Graphic Platform	Official Grafana/Dashboard
	Browser	Supports HTML5 Browser (Recommend Google Chrome)
	Language	English
SRP Hardware	Hardware Platform	UNO-2271G
	CPU	Intel® Atom™ E3825 (1.33 GHz)
	Memory	4 GB DDR3L
	Storage	32 GB eMMC
	Power Supply Unit	Option
	I/O & Port	2 x RS 232/422/485 1 x USB 3.0 2 x LAN, 1 x HDMI, supports 1920x1080 @ 60H
	Certifications	CE, FCC Class A, UL, CCC, BSMI

Ordering Information

- **IFS-RTM-UNO2271A** UNO-2271G, 32G eMMC, Linux, WISE-EdgeLink, iFactory/RTM
- **IFS-RTM-UNO1372A** UNO-1372G, 32G SSD, Linux, WISE-EdgeLink, iFactory/RTM

Optional Accessories

- **96PSA-A60W24T2** A/D 100-240V 60W 24V C14 Cord End Terminal Power Adapter
- **1702002600** Power Cable US Plug 1.8M (Industrial Grade)
- **1702002605** Power Cable EU Plug 1.8M (Industrial Grade)
- **1702031801** Power Cable UK Plug 1.8M (Industrial Grade)
- **1700000596** Power Cable China/Australia Plug 1.8M (Industrial Grade)