

# AMAX-5052

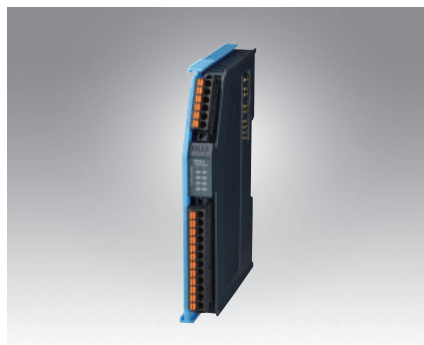
# AMAX-5057

# AMAX-5057SO

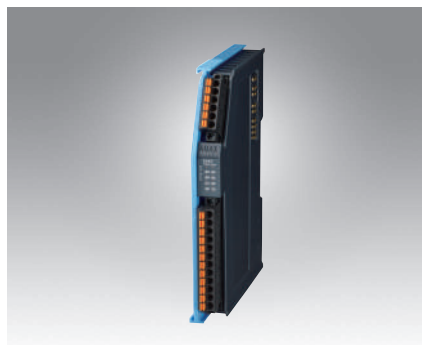
## 16-ch Digital Input Module

## 16-ch Sink-type Digital Output Module

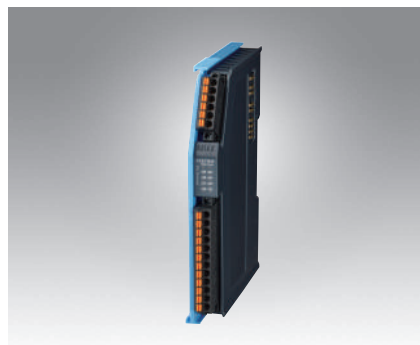
## 16-ch Source-type Digital Output Module



AMAX-5052



AMAX-5057



AMAX-5057SO



### Specifications

#### General

- **Certification** CE, FCC class A
- **Connector** Pluggable 6P+12P push-in terminal (#28~16 AWG)
- **Enclosure** PC
- **Power Consumption** 2W@24V<sub>DC</sub>
- **Protocol** EtherCAT
- **Transmission Rate** 100Mbps
- **LED Indicator** PWR, RUN, DI status

#### Digital Input

- **Channels** 16
- **Digital Input** Dry Contact  
Logic level 1: close to Iso.GND  
Logic level 0: open  
Wet Contact  
Rated voltage: 24V<sub>DC</sub>  
Logic level 1: 10~30 V<sub>DC</sub>  
and -10~-30 V<sub>DC</sub>  
Logic level 0: -3~-3 V<sub>DC</sub>
- **Input Delay** From logic level 0 to 1: 4ms  
From logic level 1 to 0: 4ms
- **Digital Filter** 3ms
- **Input Impedance** 6.8 kΩ (wet contact)

#### Protection

- **Isolation Voltage** 2,000 V<sub>DC</sub>

#### Environment

- **Operation Temperature** -25~60°C (vertical mounted)
- **Storage Temperature** -40~85°C
- **Relative Humidity** 95% (non-condense)

### Ordering Information

- **AMAX-5052** 16-ch Digital Input Module

### Specifications

#### General

- **Certification** CE, FCC class A
- **Connector** Pluggable 6P+12P push-in terminal (#28~16 AWG)
- **Enclosure** PC
- **Power Consumption** 2.5W@24V<sub>DC</sub>
- **Protocol** EtherCAT
- **Transmission Rate** 100Mbps
- **Distributed Clock** Default inactive
- **LED Indicator** PWR, RUN, DO status

#### Digital Output

- **Channels** 16 (Sink Type)
- **Voltage Rating** 10~30V<sub>DC</sub>
- **Rated Current Output** 0.3A per channel at signal "1"
- **Leakage Current** 25 μA per channel at signal "0"
- **Output Delay** From logic level 0 to 1: 10μs  
From logic level 1 to 0: 100μs

#### Protection

- **Isolation Voltage** 2,000 V<sub>DC</sub>
- **Internal Flyback diode for inductive load**

#### Environment

- **Operation Temperature** -25~60°C (vertical mounted)
- **Storage Temperature** -40~85°C
- **Relative Humidity** 95% (non-condense)

### Ordering Information

- **AMAX-5057** 16-ch Sink-type Digital Output Module

### Specifications

#### General

- **Certification** CE, FCC class A
- **Connector** Pluggable 6P+12P push-in terminal (#28~16 AWG)
- **Enclosure** PC
- **Power Consumption** 2.5W@24V<sub>DC</sub>
- **Protocol** EtherCAT
- **Transmission Rate** 100Mbps
- **Distributed Clock** Default inactive
- **LED Indicator** PWR, RUN, DO status

#### Digital Output

- **Channels** 16 (Source Type)
- **Voltage Rating** 10~30V<sub>DC</sub>
- **Rated Current Output** 0.5A per channel at signal "1"
- **Leakage Current** 10 μA per channel at signal "0"
- **Output Delay** From logic level 0 to 1: 150μs  
From logic level 1 to 0: 2ms

#### Protection

- **Isolation Voltage** 2,000 V<sub>DC</sub>
- **Internal Flyback diode for inductive load**

#### Environment

- **Operation Temperature** -25~60°C (vertical mounted)
- **Storage Temperature** -40~85°C
- **Relative Humidity** 95% (non-condense)

### Ordering Information

- **AMAX-5057SO** 16-ch Source-type Digital Output Module